

NOTES

1. THE LAND ON WHICH THE WESTLAND SANITARY LANDFILL FACILITY RESIDES IS OWNED BY W. FITZGERALD. THE LAND WAS LEASED AND THE SITE WAS OPERATED BY WESTLAND LANDFILL, INC. ADDRESSES ARE NOTED BELOW:

LANDOWNER	OPERATOR
W. FITZGERALD 63456 PATCH ROAD NEW CONCORD, OH 43762	WESTLAND LANDFILL, INC. POST OFFICE BOX 425 500 STEUBENVILLE AVENUE CAMBRIDGE, OH 43725

2. THE EXISTING WASTE FILL LIMITS WERE PROVIDED BY SPILKER SURVEYING OF CAMBRIDGE, OHIO, ON MAY 1, 1992.

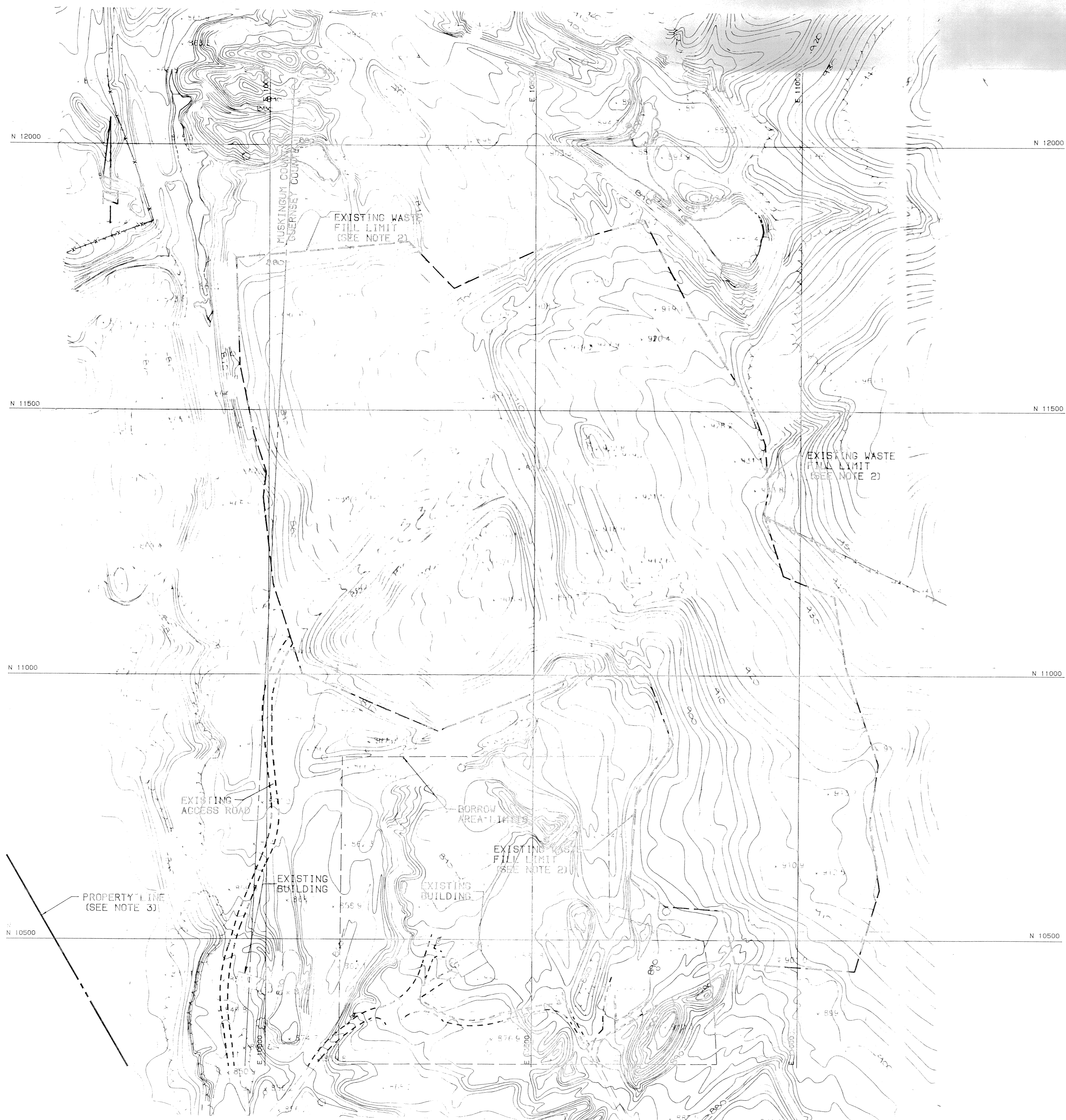
3. THE PROPERTY LIMITS DEPICTED ON THIS DRAWING ARE BASED ON DEED RESEARCH AND BOUNDARY POINTS PROVIDED BY WESTLAND LANDFILL, INC.

4. THE GRID SHOWN IS BASED ON A LOCAL SYSTEM WHICH WAS PROVIDED BY HENDERSON AERIAL SURVEYS, INC., ON MAY 7, 1988.

5. INFORMATION ON THE DEPTH AND VOLUME OF SOLID WASTE DEPOSITED AT THE FACILITY IS NOT AVAILABLE. WESTLAND LANDFILL, INC. HAS INVESTIGATED PRE-LANDFILL LAND USES OF THE FACILITY, WHICH INCLUDES SURFACE MINING (COAL) AND LIMESTONE QUARRYING, IN ORDER TO DETERMINE POSSIBLE BASE OF WASTE ELEVATIONS. WESTLAND LANDFILL, INC. HAS RESEARCHED RECORDS IN THE ARCHIVES OF THE OHIO HISTORICAL SOCIETY, SPOKEN WITH THE LAND OWNER (W. FITZGERALD) AND ANALYZED PAST USGS TOPOGRAPHICAL MAPS.

INFORMATION DERIVED FROM THIS INVESTIGATION WAS INSUFFICIENT TO DETERMINE WASTE DEPTH AND VOLUME AT THE SITE.

6. THE COMPOSITION OF THE WASTE AT THE WESTLAND SANITARY LANDFILL FACILITY TO THE BEST OF THE KNOWLEDGE OF WESTLAND LANDFILL, INC. IS LIMITED SOLELY TO NON-HAZARDOUS RESIDENTIAL AND COMMERCIAL SOLID WASTE MATERIALS. THIS INFORMATION IS DERIVED FROM REVIEW OF PAST OPERATION LOGS AND FROM OBSERVATIONS DURING SITE OPERATING HISTORY.



*Draws Volume 349 page 755
756
757
758*

42588
GUERNSEY CO. RECORD OF C.R.
VOL. 46 PAGE 182
RECEIVED
92 AUG -3 PM 2:32
RECORDED AUG 4 1992
BY J. DODD
RECORDER 41.25
Plat Cabinet 3
Slide 437

LEGEND

- PROPERTY LINE
- LIMITS OF BORROW AREA
- ~ ~ ~ TREE LINE
- EXISTING LIMITS OF WASTE FILL (ESTIMATED)
- x-x- FENCE LINE
- COUNTY LINE

TOPOGRAPHIC MAPPING WAS COMPILED BY HENDERSON AERIAL SURVEYS, INC. FROM AERIAL PHOTOGRAPHY EXPOSED ON MAY 7, 1988.

INFORMATION ON EXISTING TOPOGRAPHY IS CURRENTLY BEING UPDATED.

SCALE: 1"=100

REVISIONS	DATE	PROJECT TITLE	SHEET TITLE	DESIGNER	JOB NO.
		CONSENT ORDER 88 M 265-CLOSURE PLAN, 120 - DAY SUBMITTAL WESTLAND SANITARY LANDFILL WESTLAND LANDFILL, INC.	FIGURE 1 SITE CLOSURE PLAT	MOORE	2913
				DR. M. OSTER	SCALE: 1"= 100'
				CHR. ZITEK	DATE: JULY 1992
				APP. J. STOCK	SHEET 1 OF 1

